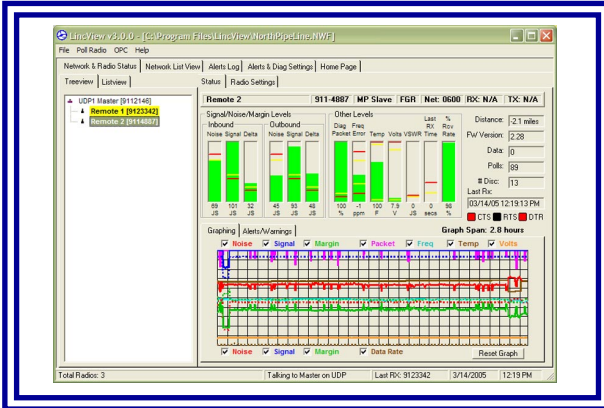


**NEW  
2005**

# LincView™ OPC

## ENHANCED DIAGNOSTICS UTILITY

**SRM WIRELESS NETWORK MANAGEMENT SOFTWARE**



LincView™ OPC (OLE for Process Control), Data-Linc's enhanced diagnostics/management software, allows the monitoring and control of networks utilizing wireless SRM Family modems. LincView OPC is particularly suited to troubleshooting and analyzing the performance of RF links in large SCADA networks, saving time and increasing confidence in the network's reliability.

Taking advantage of internal improvements in the SRM family of wireless Ethernet and serial modems, Data-Linc's latest diagnostic option, LincView OPC is a new user interface with an internal OPC server.

LincView OPC Software is compatible with Data-Linc SRM serial and Ethernet radio modems, runs on a PC with Windows® operating system and provides essential information for each modem in the network.

The LincView OPC user interface displays real time dynamic diagnostic information both graphically and textually, as well as simultaneously with normal network use. This same diagnostic information can be viewed as tags in your familiar OPC browser and utilized in OPC enabled applications. LincView and/or your HMI can provide diagnostic alarm, log, trend and archive services. (continued on next page)

### FEATURES

- Simplifies monitoring and control of large, complex networks
- Offers OPC server capability
- Graphically displays view of entire wireless network
- Provides programmable warning/alarms with logging
- Displays both ends of all RF links
- Supports multiple radio networks
- Timestamps last communication
- Delivers historical graphing of key statistics and values
- Allows re-configuration of each network modem (RF link must first be present)

### LINCVIEW OPC KIT



In other than UDP communications, LincView OPC requires the DB9 diagnostic port option on the Master radio. The field installable kit includes the DB9 port for either Ethernet or serial interface with all necessary hardware and the LincView OPC software. (Installed and components shown.)

## (CONTINUED)

Information is provided for each radio including a tree view of network topology. Examples of typical parameters include environmental (temperature, voltage), RF (signal and noise levels at each end of the RF path, percent receive rate, frequency drift), data performance (bytes sent or received, receive rate), and informational (time since last response). Units can be English, Metric, dBm, J-units, Celsius or Degrees as appropriate. Additionally, from LincView OPC's user interface, each radio can be named and its configuration parameters viewed or modified.

LincView OPC communicates with the network's Master radio using RS232, UDP, or TCP/IP (via a terminal server), as selected by the user. LincView OPC, the OPC client, and the radio network can be located at or on the same PC or at great distances from each other. Additionally, LincView OPC supports multiple radio networks via multiple sessions.

LincView OPC, provided on CD, installs on Windows 98, NT, 2000, and XP based computers. Newer Data-Linc SRM 900MHz band radio modems with call numbers of 911-xxxx and greater or SRM 2.4 GHz modems with call numbers of 241-xxxx and greater are required (Other radios are supported by prior non-OPC LincView versions). For certain limited situations Master radios can be factory ordered with an optional RS232 diagnostic port or purchased separately for field installation.

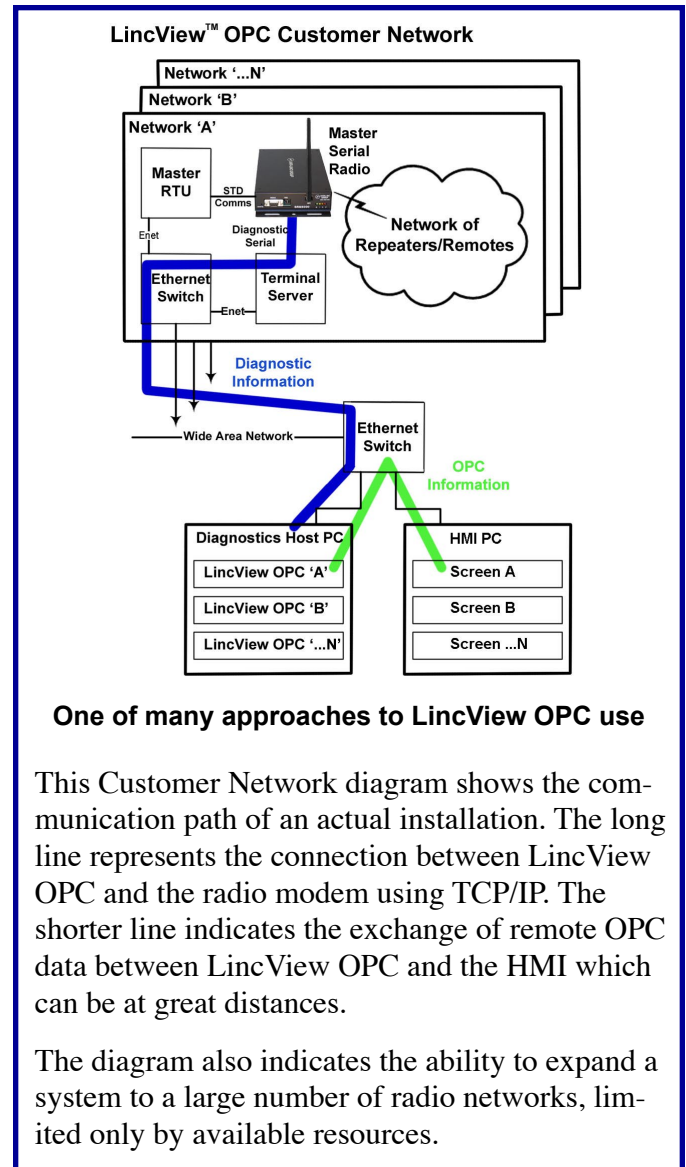
Call Data-Linc Technical Support at 425-882-2206 for more details.

## APPLICATIONS

LincView OPC is ideal for large, complex networks. It is able to provide real-time information about not only the integrity and function of the RF network but about the application operation as well. Current installations include large RF networks in the water/wastewater, gas pipeline and water collection, pumping and storage industries. For small networks, LincView OPC is also an outstanding utility that allows collection of vital information for network analysis and trouble-shooting. Contact Data-Linc for the further information regarding this powerful network management program.

LincView is a trademark of Data-Linc Group.  
©2005, Data-Linc Group. All rights reserved.

## LINCVIEW OPC NETWORK



## ALLIANCE PARTNERSHIP



## DATA-LINC GROUP

### Corporate Headquarters

3535 Factoria Blvd. SE, Suite 100  
Bellevue, WA 98006 USA  
info@data-linc.com

Tel: (425) 882-2206

Fax: (425) 867-0865

www.data-linc.com

P/N 155-09918-001B