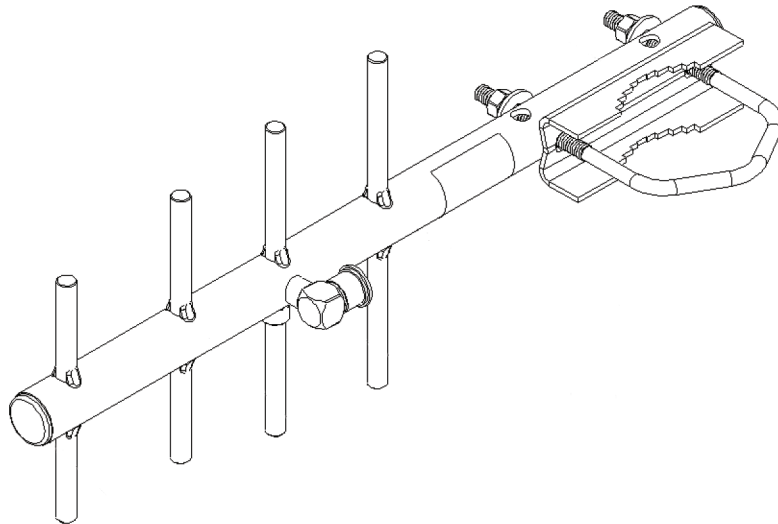


A-YB

890-960 MHz



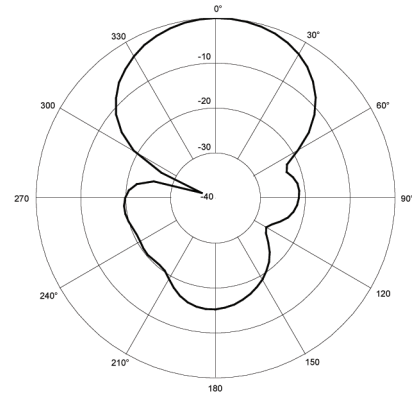
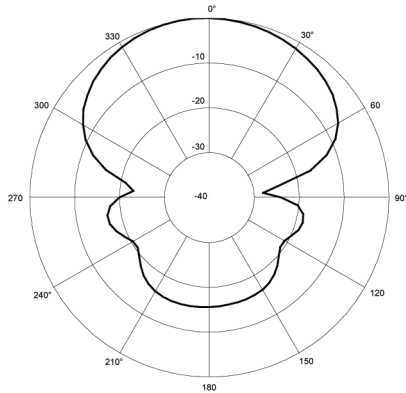
ELECTRICAL/MECHANICAL SPECIFICATIONS

Frequency. 890 -960 MHz
Nominal Impedance. 50 Ω
VSWR. 2:1 Max
Gain (radiating element). 8 dBi \pm .5 dB
Radiation Pattern.
 -3 dB Beamwidth.
 Horizontal Plane. $86^{\circ} \pm 2^{\circ}$
 Vertical Plane. $58^{\circ} \pm 2^{\circ}$
Side Lobe Level
 Horizontal Plane. -15 dB
 Vertical Plane. -15 dB
Cross Polarization Level
 Horizontal Plane. -15 dB Typ
 Vertical Plane. -15 dB Typ
Front to Back Ration. -15 dB min
Polarization. Vertical
Power Withstanding. 300 W
Connector Type. N-female
Weight. 440 g
Wind-loading. 100 MPH
Overall Length. 444.5 mm
Fixing Systems. Pole clamp
Azimuth Adjustment. 360°

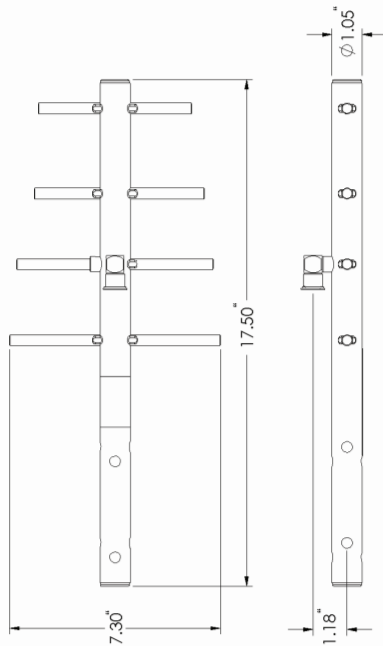
RADIATION PATTERNS

HORIZONTAL

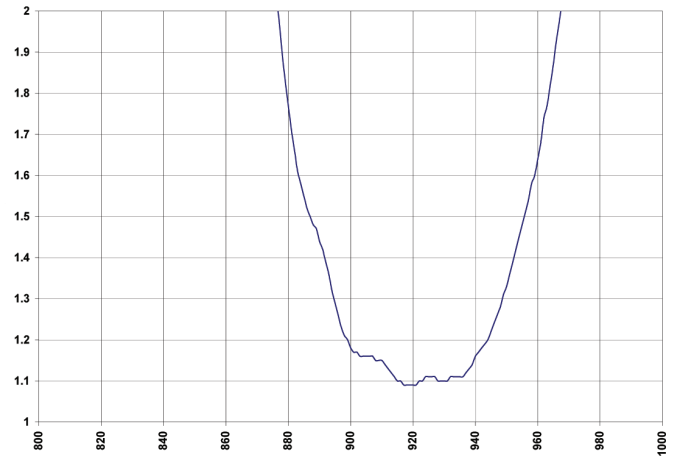
VERTICAL



DIMENSIONS



VSWR



ALLIANCE PARTNERS



3535 Factoria Blvd. SE
Suite 100
Bellevue, WA 98006 USA
info@data-linc.com

Tel: (425) 882-2206
Fax: (425) 867-0865
www.data-linc.com

Specifications subject to change without notice.

©2004, Data-Linc Group. All rights reserved.
Smart Spectrum is a trademark of Data-Linc Group.
All other trademarks are the property of their respective owners.

P/N 155-09915-001A

rev 6/04